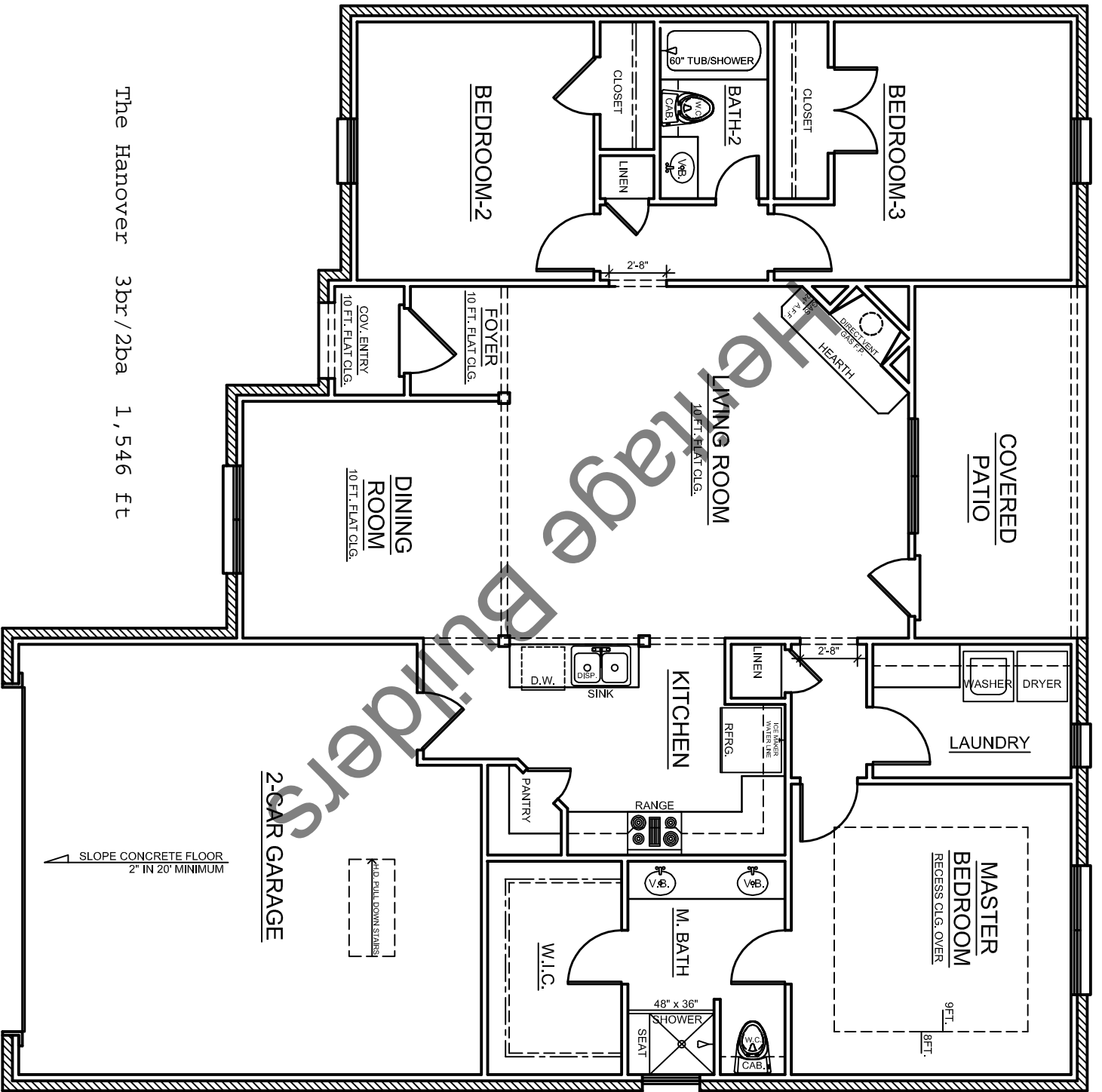


The Hanover 3br/2ba 1,546 ft



The Hanover 3br / 2ba 1,546 ft

▲ SLOPE CONCRETE FLOOR
2" IN 20' MINIMUM

— K.I.D. PULL DOWN STAIRS —

2-CAR GARAGE

COVERED PATIO

LAUNDRY

MASTER BEDROOM
RECESS CLG. OVER

9FT.
8FT.

BEDROOM-3

HEARTH

LIVING ROOM
10 FT. FLAT CLG.

KITCHEN

M. BATH

BEDROOM-2

DINING ROOM
10 FT. FLAT CLG.

COV. ENTRY
10 FT. FLAT CLG.

FOYER
10 FT. FLAT CLG.

48" x 36"
SHOWER SEAT

RANGE

SINK

D.W.

W.I.C.

PANTRY

REFRG.

10 CUPBDRS
10 W/DRY CAB

LINEN

WASHER DRYER

W.C.
CAB.

SEAT

V.B.

V.B.

BATH-2

60" TUB/SHOWER

W.C.
CAB.

V.B.

V.B.

CLOSET

LINEN

2'-8"

2'-8"

2'-8"

2'-8"

2'-8"

2'-8"

2'-8"

2'-8"

2'-8"

2'-8"

2'-8"

2'-8"

2'-8"

2'-8"

2'-8"

2'-8"

2'-8"

2'-8"

2'-8"

2'-8"

2'-8"

2'-8"

2'-8"

2'-8"